

Short but rewarding 5 days in Paris

Yu Akagi

Hiroshi Yoshikawa

6th-year in Yokohama City University



How we got the opportunity

- Prof. Morimura- Prof. Carli
(MOU between Yokohama City and AP-HP)
✂ AP-HP= Assistance publique – Hôpitaux de Paris
- Last Year:
Several doctors in emergency medicine and anesthesiology
- This year:
First two students

SAMU(Service d'Aide Médicale Urgente)

—Central role of emergency medicine in France

- Each prefecture has its SMAU
(Paris headquarters—Necker Hospital)

- **Doctors** receive phone calls from patients



Doctors make the plan

(Do patients need an ambulance or hospitalization?)

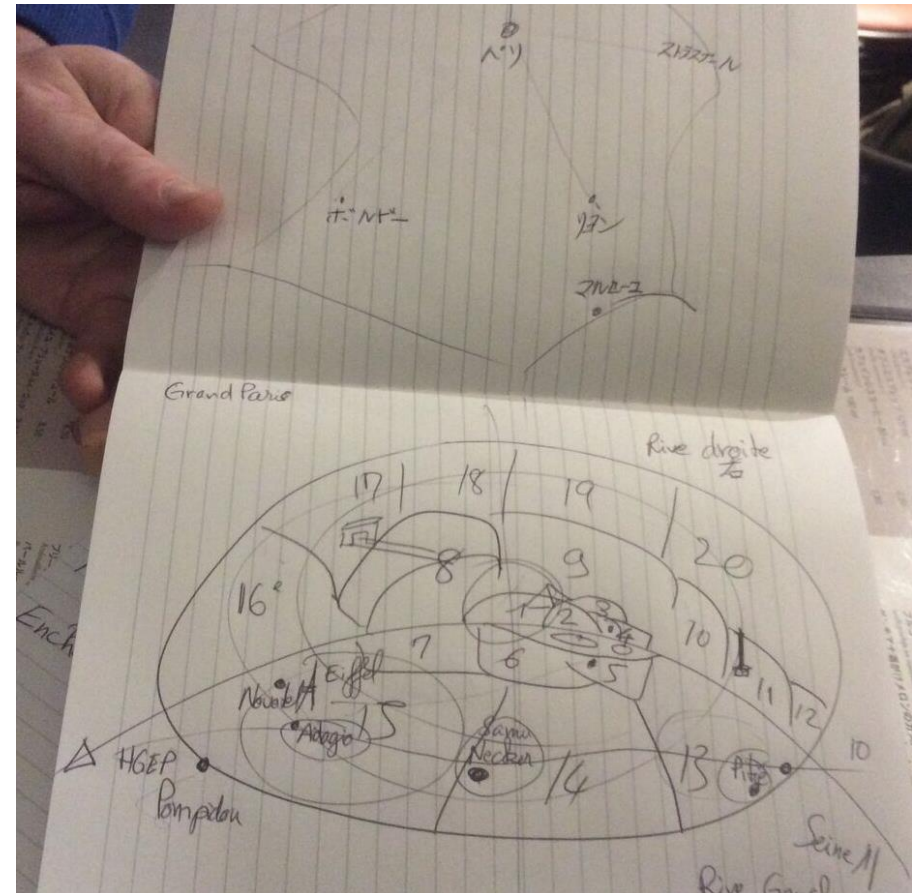


Give advice/ Dispatch an ambulance



The First Day

8:30 Mr. Alexandre Sabouret came to our hotel



9:00 arrived at Necker Hospital
met Professor Vivien, regulating room

9:30 started training





Drugs





Paramedic/ Paramedic Student



Paramedic/ Doctor /Anesthetic nurse

Student

11:00 **First dispatch**

chest pain @ a hotel in Paris

- doctor: took history, auscultation, felt pulse
- nurse: took blood, IV canula
- student: helped the team

12:30 lunch

16:00 **second dispatch**

cardiopulmonary arrest @ a flat in Paris

- Pompier: CPR
- Doctor: intubation
- Nurse: fluid , adrenaline

18:00 finished

Differences in Emergency medicine

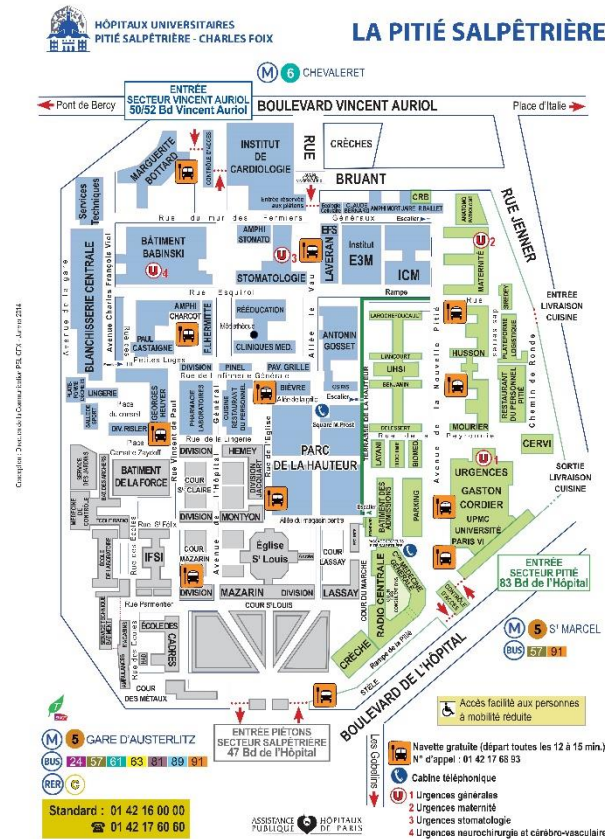
France

- **A doctor on ambulance**
→ Treat patients ASAP
- **Doctors** receive a phone,
make a decision in SAMU
- Some patients go to a hospital
Some patients stay home

Japan

- **No doctor on ambulance**
→ Take patients to a hospital ASAP
- **Paramedics** mainly do that
- Almost all the patients
go to a hospital

Pitié-Salpêtrière Hospital



- A teaching hospital of Sorbonne University
- A huge complex of buildings
- We observed the ER and trauma centre.

Emergency Room

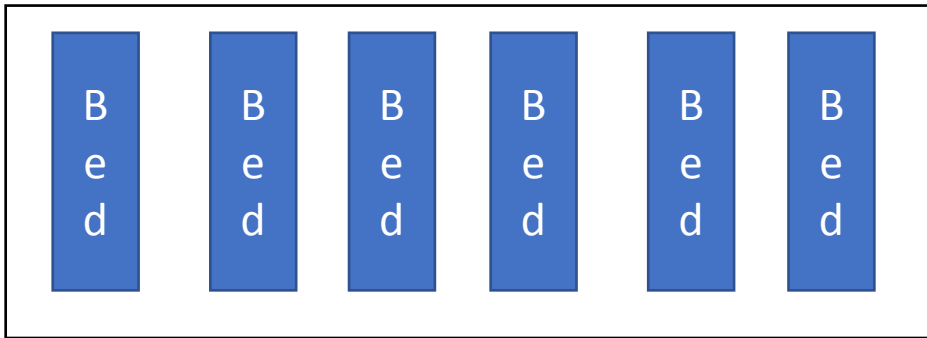
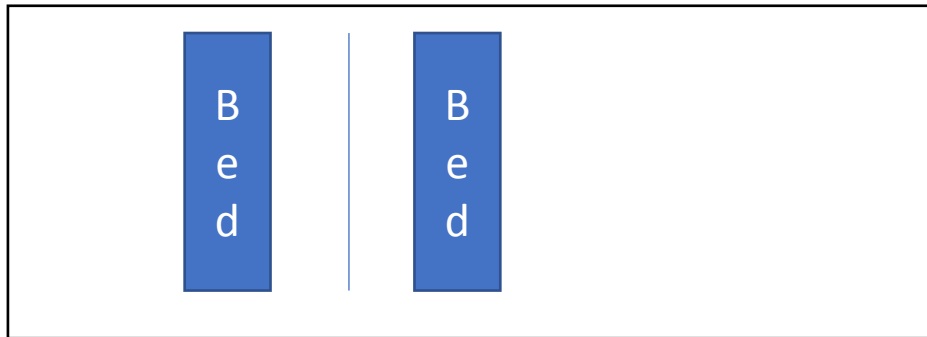
- The triage system
 - Triage nurses
 - Monitoring system



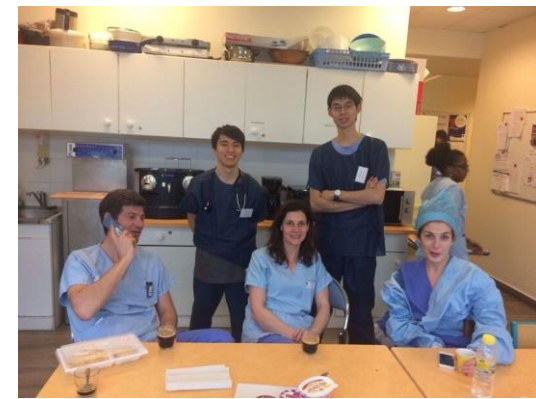
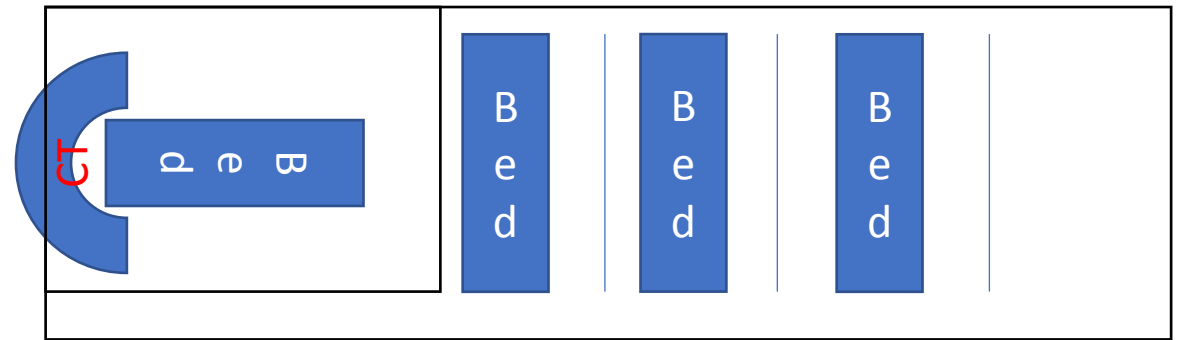
- Students
 - Patient assessment
 - Presentation
 - Treatment
 - Suturing
 - casting

Trauma Centre

- Pitié-Salpêtrière Hospital
 - Flexible

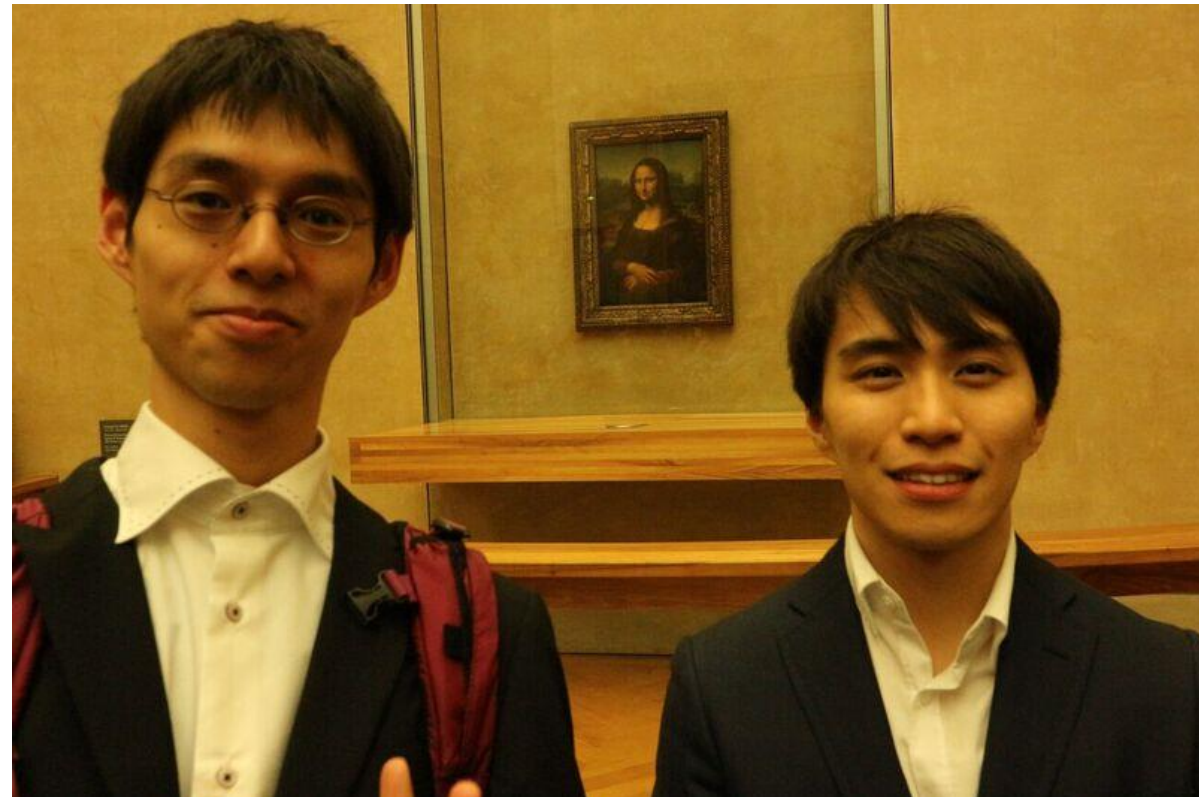


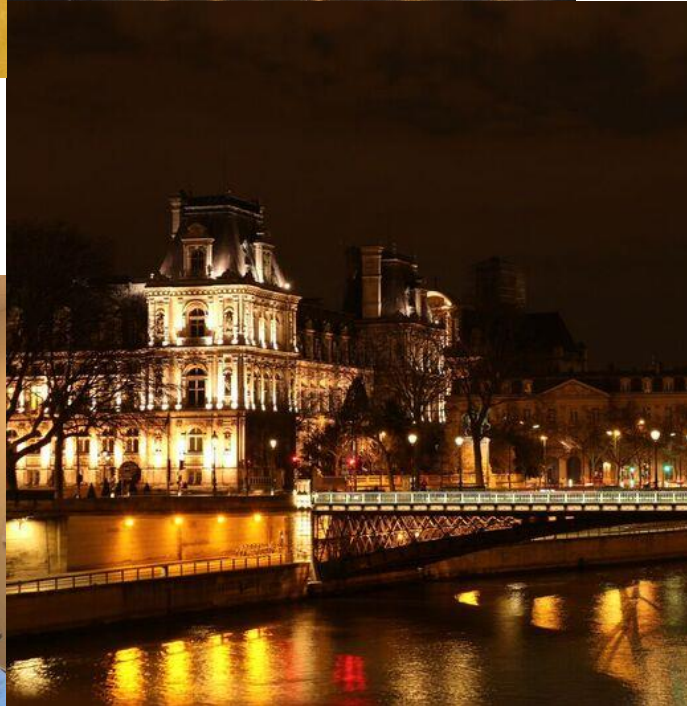
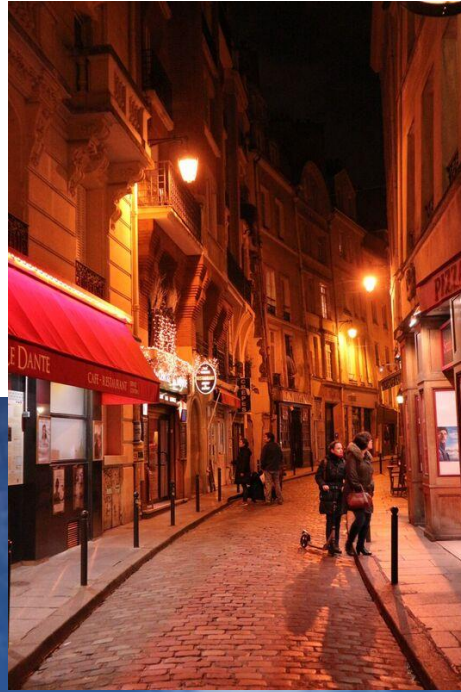
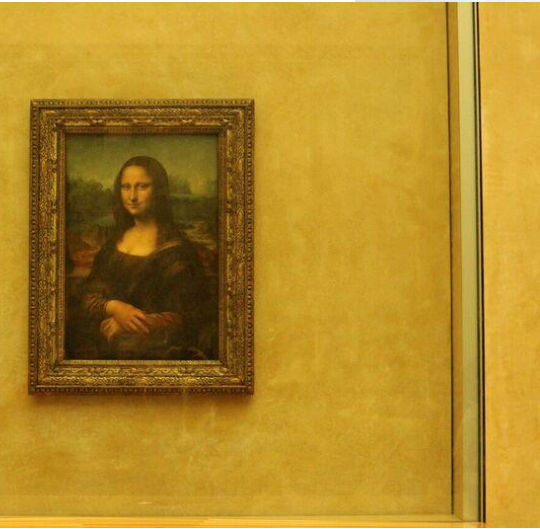
- YCU Medical Centre
 - All beds are fixed
 - Equipped with CT



Take-home Messages

- The program is short but intense and worthwhile.
- Students
- Emergency service





Acknowledgement

- I would like to thank Professor. Naoto Morimura, Professor. Vivien , Ms. Ami Ishi and all the staff from the AP-HP MOU committee and the school office for organizing this observationship. I am grateful to Mr. Alexandre Sabouret and his family for taking care of us in Paris. This program was supported by Yokohama City University Kouenkai.