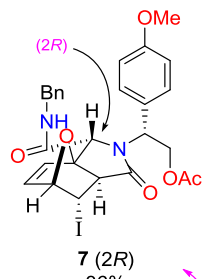
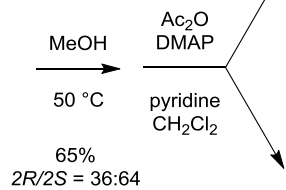
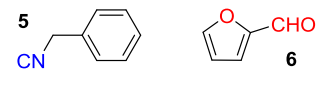
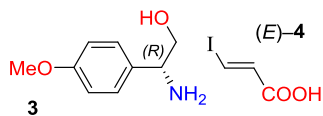
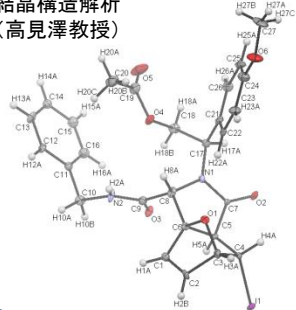
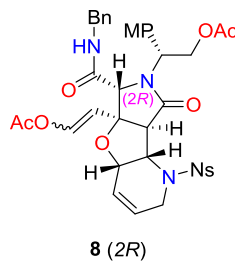


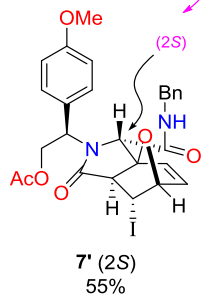
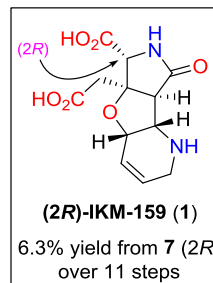
結晶構造解析
(高見澤教授)



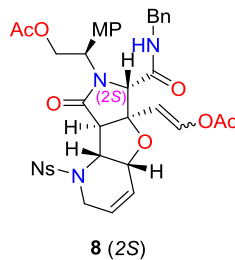
2 steps



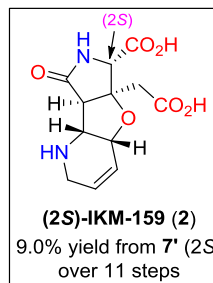
9 steps



2 steps



9 steps



diastereomeric
pair

enantiomeric
pair

- GluA2と複合体を形成。
- ラット海馬神経細胞の興奮性神経伝達を阻害 (in vitro 活性)。
- マウスの自発的行動を抑制 (in vivo 活性)。

- (2R)-体の活性はいずれも認められず。